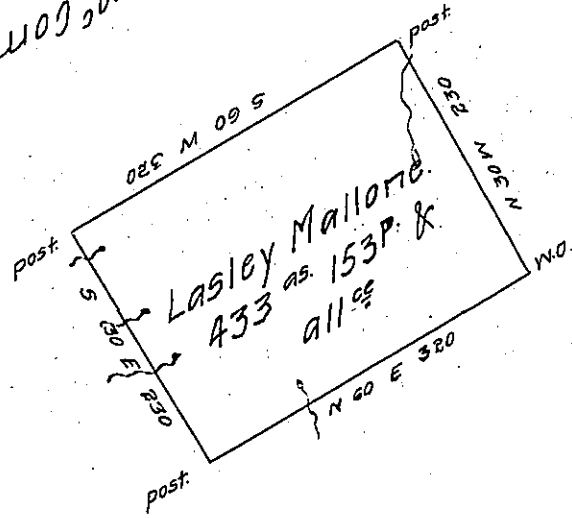


61111002W 50111041



Polly Williams.

Situate in Mifflin County Bald Eagle township on the waters
of Big Bald Eagle Creek containing four hundred thirty three
acres, one hundred fifty three perches and the usual allowance
for roads surveyed 3^d June 1794 in pursuance of a warrant
dated 13th March 1794

Jo. J. Wallis D.S.

Daniel Brodhead Esq. S.G.

IN TESTIMONY that the above is a copy of the original remaining on file in
the Department of Internal Affairs of Pennsylvania, made
conformably to an Act of Assembly approved the 16th day of
February, 1833, I have hereunto set my Hand and caused
the Seal of said Department to be affixed at Harrisburg,
this twenty-fourth day of March 1908.

Henry Howell
Secretary of Internal Affairs.